

**Sunday 4th May
2025**



**Artists Exhibition
and Art
Workshops**

Welcome to Bingley 25's artists exhibition and arts workshops.

We are delighted to host artists who live or work locally, and to show their work in six venues. You can browse, chat and even buy artworks.

We also have several local groups exhibiting. Perhaps you will be inspired to join a group and get creative. Or even set one up!

Why not sign up to one of our workshops

We know that we have not found all our local artists! Do get in touch if you would like to exhibit in the future.

Organisers: Rose Jollands, Marcus Ratray, David Starley & Simon Wakefield

Free Workshops

All workshops take place in the Bingley Baptist Church Hub and will last about 30 minutes. As numbers are limited to 10 places per workshop, please book your free place in advance using the links below to avoid disappointment. Beginners very welcome!

11 am Jo Scott - Charcoal Drawing.

Jo will lead a charcoal drawing session open to everyone. BOOK [HERE](#)

12 pm Louise Garrett - Drawing Out Detail

Create mixed media pictures of Bingley's favourite architectural features. Cut or torn collage material is glued to the paper surface and then details are added by drawing and painting with inks, crayons and paints. BOOK [HERE](#)

1 pm Nicky Storr - How to Draw

Join Nicky for gentle and fun guided drawing sessions using Nicky's pre-prepared draw along sheets. Learn to draw everything from cats to daffodils. BOOK [HERE](#)

2 pm Scribble Studios - Inspired by Heritage

This interactive collage workshop is aimed for the whole family. See how heritage can inspire the creation of new mixed media artworks. BOOK [HERE](#)



All venues except Jane Fielder are open 10 am - 4 pm

1. The Craft House

Main Street, Bingley, BD16 2HT. Access to upstairs via steps

Kath Bonson
Ann Davies
Sarah Harris
Caroline Rilatt

2. Paula Dunn's Studio

Wellington Street, Bingley (back of Craft House opposite Railway Station)

Ian Burdall
Meg Carter
Paula Dunn
Saima Jewel
Charlotte Whitmore

3. Bingley Baptist Church Hub

Park Road Bingley, BD16 4LJ

Bonehead
Clare Caulfield
Louise Garrett
Linda Hollingshead
Leyla Murr
Remi Pavlovich
The Pilgrims
Michele Russell
Sue Sands
Jo Scott
Scribble Studio
Nicky Storr

4. The Bingley Gallery

Park Road Bingley, BD16 4BQ

David Starley
Bradford District artists

5. Damart Mill 1871 Cafe

via Bradley Street off Park Road, BD16 4DU

Andrew Adamson
Bingley Art Friends
Bingley Art Society
Bingley Graphite Art Group
Jochen Gren
Rose Jollands
Siya Liu
Terry McAllister
Chris Rouse
Sharon Snaylam
Rob Thomson
Urban Sketchers
Stella Verity

6. Jane Fielder - Open House

Wynyates, Bromley Rd, BD16 4DA. Access to garden via steps. Open 2 pm - 7 pm on 3rd, 4th and 5th May.

Jane Fielder



Andrew Adamson

After retiring from a long career in the Civil Service Andrew is enjoying the rediscovery of Art, particularly oil painting, which he does almost on a daily basis. Inspired by the stunning variety within the Yorkshire landscape,

Andrew enjoys working outdoors as much as possible. His artistic background is in printmaking, which gave him a good grounding in techniques such as etching, linocut and silkscreen, as well as an understanding of the principles of good composition and colour harmony. Largely self-taught as a painter, he has been using oils and watercolours since his early teens, but still very much enjoys trying different approaches and techniques. Andrew feels there is no need for any great philosophical message in his work. He just paints what he sees the way he sees it and lets the paintings speak for themselves.

https://www.instagram.com/andrew_adamson_art/



Bingley Art Friends

Bingley Art Friends was formed in 2022 through a mutual interest in art and sketching. The group usually meet on Friday mornings in and around Bingley to sketch and share ideas. In doing so they hope to encourage and inspire

each other towards their artistic goals. In favourable weather they like to find suitable locations to work outdoors, but otherwise meet in cafes in and around Bingley, or at The Hub in Myrtle Park. They enjoy using a broad range of media to suit their individual styles and preferences, and have recently worked on some collaborative projects where they each work on a different segment of the same picture in their own preferred medium. The finished piece reflects the diversity within the group.

New members are always warmly welcomed.

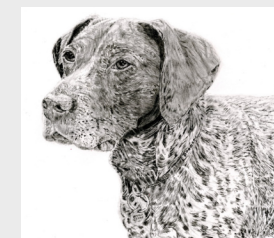


Bingley Art Society

The Bingley Art Society meets every Thursday afternoon at Wilsden Village Hall. There is also a Wilsden Art Class on Mondays in the same location. See Chris Rouse for details

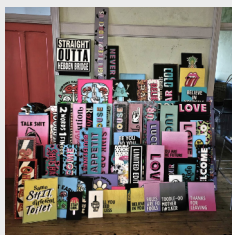


Bingley Graphite Art Group



The Bingley Graphite Art Group was created in 2021 by Dennis Bristow, a Bingley local pencil artist who, with deteriorating eye-sight, wanted to help people who wanted to draw achieve that aim. The idea is that working with others of different backgrounds and abilities, can help everyone improve

their skills and gain a deeper understanding of the subject. The BGAG Facebook group presently has over one hundred members as far away as the USA, some of whom participate in the fortnightly homework sessions, by posting their work online. The group believes that by sharing experiences and learning from each other, they can all grow as artists. They don't sit as a group to draw, although they do have demonstration sessions on technique. Homework is set by each member in turn, for everyone to complete at home during the two-week gap. At the next meeting they each reveal our work for the group to discuss. Novice members can then get full help from everyone else. It works very well! Local BGAG members meet in the upper room at The Chip 'n Ern pub on Main Street. The group have exhibited at Damart, Bingley Arts Centre, The Chip 'n Ern, and for the past two years at Art in the Pen in Skipton.



Bonehead (Mark Whitford)

Mark Whitford aka Bonehead grew up on Park Road in Bingley and attended local schools where his only interests were in art, graphics and design technology. Going on to art college, he hoped, would lead to a creative

career. But jobs available to youngsters were poorly paid and, frustrated, he walked onto a local building site and was offered a job labouring. The combination of hard graft combined with creativity in restoring and developing property worked well for many years. Attending night school to learn autoCAD, Bonehead came across a laser cutting machine, an amazing bit of kit. He bought his own so he could offer signage work alongside doing building job. Not content with the serious stuff and, being a fan of street art and graffiti art, he put the cutter and spray-paint into practice with some art work. He then brought them down to the Bingley Gallery, where proprietor David Starley offered the chance to exhibit them. Having now sold quite a few pieces, Mark now has the confidence to carry on.



Kath Bonson

Kath is lucky to be surrounded by the inspirational West Yorkshire landscape which changes its nature with the weather and seasons. She delights in the play of light on the moors and hills, the detail of textures, the possibilities of

colour. It is a complex landscape, shaped and influenced not only by its geography and geology, but also by Man's use and abuse of it. Kath's response to it tries to mirror the range of complexity and diversity. In this she finds ceramics to be a wonderful tool: sometimes allowing her to push at the boundaries of technique, sometimes using techniques refined over centuries; sometimes starting a piece with a clear vision, other times just letting the clay speak and the work evolve. On some of her observational pieces she uses simplified, screen-printed photographs. Layers and combinations of glazes and oxides are then used to add colour and further texture to the already evocative surfaces. With all of her work she aims to create a sense of place, based around the Pennines, that offers multiple layers of complexity and interpretation - both textural and visual.

<https://www.instagram.com/kath.bonson.ceramics/>



Ian Burdall

Ian is painter and photographer who paints in oils. He also draws in charcoal and pastels. Ian works mainly on the east coast of Yorkshire and likes to paint the working areas of the coastline, the docks the working boats,

industrial sites and the people who work there. His favourite area is between Staithes, a village that he is connected with through exhibiting in the Staithes Gallery and the Staithes festival of arts and heritage and Redcar a town rich in fishing and the steel industry history. He has documented the decline of the steel works and shared an exhibition in South Square Bradford about the blast furnace being demolished and the changing industrial skyline. Ian has had paintings exhibited in the Ferrens Gallery Hull, the Mercer in Harrogate, the Leeds and Bradford opens as well as the Sculpture Lounge Holmbridge as part of the Holmfirth art fair. He has taken part in the Saltaire Arts Trail since it started. He is currently working on paintings of Bradford inspired by the selection for the City of Culture.

<https://www.instagram.com/ianburdall/>



Megan Carter

Megan is a surface pattern designer based in Bingley, known for her bold, stylised patterns that combine a modern sensibility with love for design history. Drawing inspiration from the natural world, particularly flowers,

Megan's work reflects a fresh interpretation of classic design motifs. She produces a collection of hand-printed and digital printed fabric designs that are made up into fabric accessories and lifestyle products in collaboration with a local West Yorkshire based upholsterer and seamstress. Megan also creates a collection of paper products including greetings cards, wrapping paper and notebooks. Sustainability is a strong focus within Megan's work where she prioritises using certified organic fabrics, eco friendly printing inks and recycled paper and card stock.

<https://www.megancarterpatterns.co.uk/>



Clare Caulfield

Bingley based artist and printmaker Clare Caulfield is inspired by her travels around the world and creates lively paintings of iconic cities in a variety of media including watercolour, acrylic, pencil and dip pen & ink. Bustling New

York streets lined with yellow taxis, Parisian cafés and Venetian squares are just some of her most popular scenes. Closer to home Clare has turned her attention to the historic Shambles of York, County Arcade in Leeds and the beautiful architecture to be found within Saltaire Village. Salts Mill, The United Reformed Church, the shop fronts of Victoria Road and the cobbles of Albert Terrace have all been interpreted in her inimitable style. She has also produced a series of work capturing the rugged beauty and charm of Yorkshire's coastal towns: Whitby, Robin Hoods Bay and Staithes. Clare will be showing a selection of her signed prints and stretched canvases.

<https://clarecaulfield.co.uk/>



Ann Davies

Ann is a painter and stitch artist working from her studio at The Craft House in Bingley. With a love of colour, texture and form her work reflects this inspired by both natural forms and man-made structures. She teaches

"Glorious Stitch" workshops at The Craft House, with a long term vision of a centre of excellence for textiles here in Bingley. She will be showing paintings, textile pieces and her very individual Art Dolls that showcase her love of stitch and textile techniques.

<https://anndaviesstitch.wordpress.com/>

<https://www.instagram.com/daviesann49.ad/>



Paula Dunn

Paula is a landscape painter who works from her Bingley studio. Paula's work is deeply influenced by walking the land, where climate and weather shape her artistic vision. Her practice has evolved from representational

landscapes to more abstract interpretations, primarily using oils and cold wax to create depth and texture. Her paintings are held in private collections worldwide, and she contributed to Waymaking - an award-winning anthology of prose, poetry, and artwork by women inspired by the landscape (Vertebrae Publishing). Alongside her studio practice, she designs and delivers workshops introducing artists to working with oils. While regularly teaching at The Craft House in Bingley, she has also been invited to lead masterclasses in Canada and Ireland in 2025. She is the selected artist for the North York Moors National Park's 2025 conservation exhibition. In September 2025, her book Atmospheric Landscapes: Using Oils and Cold Wax will be published by Crowood Press.

<https://pauladunnartist.com/>



Jane Fielder

Jane is a prolific local artist with a strong interest in colour, texture and pattern. Her work is an ever-evolving process, with recurring themes of ageing, life as a race against time and finding beauty out of ugliness and

order out of chaos. From within these recurring themes come her quirky urban landscapes which have affectionately become known as 'Janescapes'. Many explore the grey towns around Bingley in a celebratory way with bright flecks of colour and humorous incidents reflecting the vibrancy that people bring to the monochrome landscapes. Jane will be opening her house to welcome visitors on the day. She will have a wide variety of her artworks to view and discuss.

Jane's open House is from 2 pm - 7pm on 3rd, 4th and 5th May.

<http://www.janefielder.com/>



Louise Garrett

Louise Garrett is an artist who loves sketching and painting 'on location' and as a keen 'Urban Sketcher' and 'Plein Air' painter she will be displaying/ selling a group of sketches, paintings and prints that focus on

Bingley town, the two parks, the River Aire and St Ives for the Bingley Creates! event. She has led numerous community arts workshops for local groups, and regularly exhibits at The Bingley Gallery.

<https://www.instagram.com/louisegarrettart/>

<https://louisegarrettartist.com/>



Jochen Gren

Jochen embroiders using Appletons wools which lend themselves to the way he embroiders as they have a large range of colours. He started embroidering kits at first but gradually became dissatisfied and it was then he

began to start to embroider his own abstract designs. A motif that has frequently appeared in Jochen's work is the spiral which is like a spine that runs throughout the different pieces. Colour is extremely important to him and whatever colour comes out of the thread bag is always used. He loves the chance element of what comes out leading to finding new colours that work together. At first he tried to pick the colours that he would use but the embroideries he created were not what he wanted and it was then that he began to let whatever came out of the bag to be the colour he would use.

https://www.instagram.com/jochen_gren/



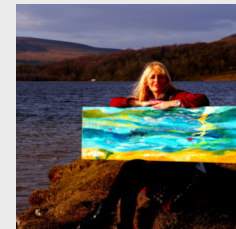
Sarah Harris

Sarah Harris is a Bradford born artist who creates small edition, hand pulled screen prints from her studio in Rawdon. Focusing on depicting Yorkshire landscapes her work has been exhibited at The Hepworth

Wakefield, Cartwright Hall and The Mercer Gallery, as well as creating artwork for Northern Monk Brewery. Sarah's screen prints are regularly inspired by her upbringing in Shipley, depicting places she feels a connection to and often revisiting these subjects, such as Saltaire and Shipley Glen Tramway. Harris looks to transport the viewer to a memory through her work, believing in the importance of the connections of people and place. How we remember a place is an important factor in each print, in recollecting colour as well as space. Each print starts with a pen drawing to create the basis of the piece.

<https://www.sarahharrisprints.co.uk/>

<https://www.instagram.com/sarahharrisprints/>



Linda Hollingshead

Linda Hollingshead is a celebrated international artist, whose passion for painting and travel has taken her worldwide. Water features predominantly in her art, oceans of the world, rivers and lakes. Presently, she is

inspired by the Yorkshire Dales' breath-taking scenery, focusing on capturing the energy of waterfalls. Her unique technique involves incorporating water and rock particles from waterfalls and rivers into her paint mixtures, creating a tactile connection to nature. Linda's style is a dance between realism and abstraction. She uses layered paint, collage, and texture to convey the vibrancy of landscapes. She works across various mediums, including watercolour, acrylic, ink, and collage, creating vibrant statement paintings. Linda mentors artists and is well known for her friendly, enjoyable courses, painting holidays and workshops. She fosters a supportive environment and encourages artists to express their unique voices.

<https://www.lindahollingshead.co.uk/>

<https://www.instagram.com/artworldoflindahollingshead/>



Saima Jewel

Saima Jewel represents traditional craftsmanship and bespoke contemporary design with an Eastern twist. The collections are influenced by the culture and heritage behind the brand. Saima is incredibly proud of her

British Asian background and enjoys exploring the endless beauty of Indian and Pakistani pattern design. She also loves the intricacies of traditional Western filigree style jewellery. Her jewellery designs symbolise an infusion of the two cultures, a new perspective on East meets West. She uses embellishments such as semi precious stones and beads along side oxidising techniques to enhance the pattern in the design to the fullest. Each piece is handcrafted from her workshop in Bingley using precious and semi-precious materials.

<https://www.saimajewel.co.uk/>

<https://www.instagram.com/saimajewel/>

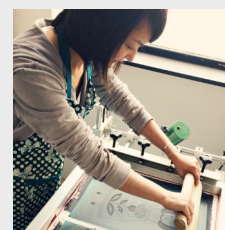


Rose Jollands

Rose paints landscapes, often of the local area and pursues a varied approach to keep her perspective fresh. She uses mixed media with acrylic paint to visualise how she feels about each view. Inspired by the

fleeting changes in weather and how the textures of surfaces seem to alter in different lights. She's always curious about ways of rendering paint so the images are often not quite of this world. They mix imagination, memory, reality and art history onto a tactile looking surfaces. Rose often reuses old picture frames, removing the glass and painting over the whole board & frame as one. This time she's also showing works on paper within customised frames. Rose has moved relatively recently to the Bradford area, living in many places before, including Leicester, mid-Wales, Burnley and Huddersfield. She feels this somewhat nomadic life has prompted her to explore the landscape both rural and urban, looking for interesting arrangements in places new to her.

<https://www.instagram.com/rosejollands/>



Siya Liu

Siya Liu is an illustrator and printmaker, specialising in screen-printing under the name DoodleDuck Designs. She uses traditional hand screen printing techniques to produce different ranges of art prints - from small A5

prints to multicoloured A2 art prints. Most of the works are inspired by her surroundings and often mixed with folk art traditions. Her designs are elegant, decorative and you can often find a little mid-century twist such as geometric pattern details. Alongside her art prints and stationery designs, she also has designed a collection of doll making craft kits. Her ethos is about celebrating the slow craft movement. Siya is originally from China but has made Britain her adopted homeland and has been living in the West Yorkshire countryside over 10 years. If you've lived somewhere for a while, chances are you feel some pride for the place. Many of her art prints are inspired by the British countryside and the adventures she has had on many walks and bike rides. Siya is always keen to talk about collaboration and commissions.

<https://www.instagram.com/doodleduckdesigns/>

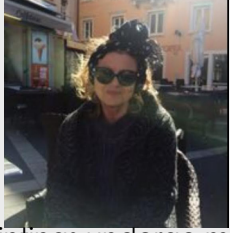


Terry McAllister

Terry has painted and drawn all his life, working in watercolour, as well as oil and acrylic paint. He paints landscapes and townscapes and is particularly interested in light and shade, and reflections on water. Still

life is another subject he is drawn to, and he enjoys trying to depict different textures and materials in paint. Terry is also an "Urban Sketcher", and goes out regularly with others to sketch in the towns and villages around Bingley.

<https://www.instagram.com/terrymac64/>



Leyla Murr

Leyla's paintings are constructed by coordinating different elements namely the application of paint on canvas, the use of colour and spontaneous mark making. The process is rarely planned and her

paintings undergo many changes until she brings them to the point where they feel resolved. Leyla creates art which explore a meeting point between reality and abstraction with a finely-tuned sensitivity to colour and deep fascination with the mechanism of light. She invites the viewer to notice how light falls and colours interact in a world surrounding us, the source of her inspiration.

<https://www.instagram.com/leylamurr/>



Remi Pavlovich

Inspired by themes of nature, connection, and transformation, Remi's work explores the relationship between people and their environments, reflecting on how community and the natural world

shape well-being. Her latest series examines the balance between industry, nature, and human connection in an increasingly work-driven society. Drawing inspiration from the Victorian era, Remi looks beyond the machinery and progress to the individuals who powered the mills. She is drawn to the lives of the mill workers and the green spaces they cherished, such as Prince of Wales Park and St. Ives Estate. Through mixed media textile panels incorporating printed photographs, historical documents, paint, and embroidery, she weaves together the past and present, highlighting the resilience of community and the restorative power of nature. Loose threads connect each panel, symbolising the fragile yet enduring ties between people, place, and history. This work serves as a reminder to seek out connection - to land, to heritage, and to each other.

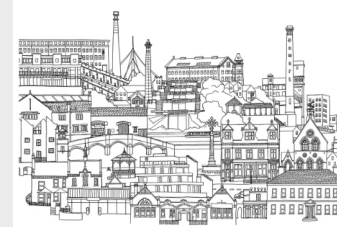
https://www.instagram.com/remipavlovich_art/



The Pilgrims

The Pilgrims are a group of people with various levels of artistic skill, that meet in The Hub at Bingley Baptist Church most Saturdays. Jake Attree, a local artist leads the endeavour to be creative. The group members

encourage each other, try and provide some ideas to help develop the work they are doing, and have fun! The Hub provides a warm, welcoming space that reflects Bingley Baptist's vision to its community. All are welcome.



Caroline Rilatt

Caroline is an artist living in Bingley who specialises in detailed drawings of local places and memorable portraits of people and pets. She is inspired by her surroundings, with a particular focus on architecture, creating her first

townscape drawing of Bingley as a personal project that she later adapted into a print and product range for the Craft House. She works freehand from her own reference images, plotting each building on the paper in pencil before overlaying more detail in black pen to form her uniquely composed townscapes. Exploring this style, she has built up a collection featuring other beautiful towns in Bradford and Yorkshire, and has created bespoke drawings for the University of Bradford and Bradford City AFC. Caroline is also well known for her realistic and captivating pencil portrait commissions. Working directly from photographs, she carefully captures the unique character of each subject that she draws in meticulous detail, producing portraits with an amazing likeness that are timeless and emotive.

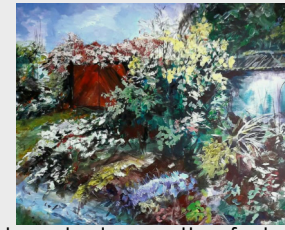
<https://www.carolinerilatt.co.uk/>



Christopher T. Rouse

Born and bred in Bradford and a resident for 86 years. Chris has been painting for nearly 50 years. His first paints were a set of oils. He attended night school for two years locally and then attended art classes with a

Pudsey artist, Geoff W. Birks for 10 years. Geoff then persuaded Chris to take on one of his classes and teach himself. Chris was then forced to give up his landscape gardening business because of ill health and concentrate on painting and running his art classes ending up with six weekly classes in and around Bradford and an art gallery in Fulneck Pudsey. Whilst painting with Geoff, Chris took up watercolours and other medium. For many years his first choice became watercolours. His subject matter has mostly been landscapes of the Dales, Lake District, Scotland and other items of interest, all including his love of trees, skies and the hills. Chris closed his gallery six years ago and most of his classes but still runs two classes including the Wilsden Arts Class. He is a member of Bingley Art Society.



Sue Sands

A Bradford born artist now living in the Worth valley. Sue is a versatile creative who is equally comfortable painting, drawing or sewing. Interested in varied subject matter, nature often plays a big part in her work, especially the

tangled growth of plants and trees when left to do their own thing. Inspiration comes from her surroundings. Sue attended Bradford art college in the 1960s studying Display whilst working as a window dresser in Bradford. This led to Sue being making theatrical costumes for a Manchester theatre company and working in high street fashion. During the 70s Sue did technical illustration for Decca TV and radio. At the time this was a very male dominated field and Sue initially worked from home pretending the work was done by her former husband before Decca realised who was behind the illustrations and set her on in the drawing office as the first female technical illustrator in an office of six men. Later in life she was lucky enough to be able to spend a year at Calderdale college studying art and design.

<https://www.instagram.com/suesands80/>

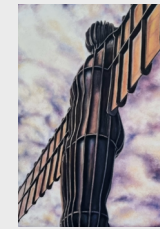


Michele Russell

Michele has lived locally most of her life, an area she continues to explore and enjoy, gaining inspiration for her artwork. She was offered a place at Art College having gained the qualifications. However, she made the

choice to join a local company Damart, later becoming a Mental health Nurse and Therapist, art being integral as a Mindfulness Skill both personally and with clients. Michele's work is often abstract using mixed media to express her view of the world around. The freedom of totally being in the moment when painting, stitching and making, reflecting that the mind and art are intriguing, both complex and individual. Each piece of Michele's work is intriguing, individual, different, offering the observer to see whatever they see with no expectation or judgement. People are not the same as no artist is the same, all bring their own perspectives of life to this world. Michele has a small studio "Le Petit Atelier" in her garden.

<https://www.instagram.com/michelerussell1904>



Joanne Scott

Jo is a local artist originally from the North East of England near the Angel of the North. She studied a B.A honours degree in Fashion at the University of Central Lancashire. Her career brought her to Bradford 26 years ago. She

worked for Team McLaren the F1 racing team as a designer of their merchandise range for nearly 10 years. Art has always been her passion and over the last 12 years she has been commissioned to paint portraits and landscapes. Jo loves creating realistic effects working with pastel and charcoal. Jo has taken part in numerous community art projects and held art workshops at local primary schools. Here she exhibits a collection of work that captures the diversity of Bradford. Her inspiration came from Diwali 'the festival of lights', finding light amongst the darkness.

<https://www.instagram.com/joscottportraits/>



Scribble Studio

Scribble Studio is a creative workshop space dedicated to fostering artistic expression and imagination. Through weekly classes and seasonal workshops, Scribble provides a welcoming environment where

children, teens, and adults can explore, create, and develop their artistic skills. Scribble Studio's ethos is that art is a powerful tool for self-expression, connection, and discovery. By exploring themes of heritage, identity, and belonging, they aim to inspire meaningful conversations and create work that celebrates both personal and shared histories. Scribble Studios' children and teen classes have recently been working on a project exploring the theme of heritage - what it means to them personally and how it shapes their identity. Through a variety of artistic techniques, students are delving into family traditions, local history, and personal narratives, translating these ideas into visual storytelling. This project encourages young artists to reflect on their roots while developing technical skills and creative confidence.

https://www.instagram.com/scribble_studio_bingley/

Sharon Snaylam



Sharon is an artist and teacher with a background in ceramics, and has always had an interest in the textures, materials and history beneath our feet. The work here represents a response to walking in landscape, both locally and

further afield. It represents her experiences of walking, making her own way on aged paths which change with time and her memory. Challenges which happen in everyday life are put into perspective.

<https://sharonsnaylam.square.site/>



David Starley

David is an archaeologist turned professional artist. He aims to evoke an emotional response to our environment through his art. Oil paint is applied thickly with a knife to produce an almost sculpted image. Subject

matter includes the landscape of Yorkshire and beyond. Trees are the central focus of much of his work. By portraying the forms and character of individual specimens, or groups in woodland, the viewer is led to a greater appreciation of these living structures - changeless yet changing, strong yet vulnerable; never to be taken for granted. David runs The Bingley Gallery where his work and that of other local artists can be seen throughout the year.

<https://davidstarleyartist.com/bingley/david-starley>

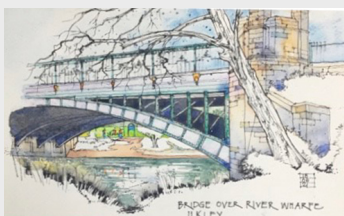


Nicky Storr

Nicky is an illustrator working in Bingley. She left art college with a BA in Graphic Design and used her skills initially to work in the art of greetings cards. However, the call and appeal of illustration and continuing drawing

was a strong one for Nicky – and it saw her work in the world of children's TV and character design for a number of years. Throughout this time she also diversified into pattern design, and even set design. In recent years Nicky has been the main teacher at Young Master's Visual Art School where she has shared her knowledge and skills with the next generation of Bradford artists and has gained an invaluable insight into teaching art and its various disciplines. She accepts commissions for watercolour portraits of loved ones and family that are done in a fun children's book style. Nicky takes inspiration from family, friends and Nature that is all around, and wants to create illustrations that make people smile.

<https://www.instagram.com/nicolourok>



Rob Thomson

Rob trained as an architect and after retirement concentrates on the challenges of painting in watercolour, while on occasion working with pastel and oil. A lot of Rob's work includes buildings within the urban environment

and natural landscape. Local scenes figure strongly and the vivid colours of the Mediterranean, the east and Cuba are a constant inspiration. Rob is a member of Yorkshire Urban Sketchers, a part of an international group who meet up regularly to sketch in town and cities locally and around the world.

<https://www.instagram.com/thomson2750>



Stella Verity

Stella is a primary school teacher and after retiring was persuaded by her partner, Rob Thomson, to join him at watercolour painting lessons at Shipley College. Since then she has joined a number of art groups and clubs and

exhibited in various venues. Stella is a keen gardener and cook and this is reflected in her paintings which are usually flowers, fruit or vegetables. Stella loves the vibrant colours and the amazing patterns of the natural world and try to replicate the beauty and variety in my work. She has recently tried her hand at collage, inspired initially by stained glass windows, and really enjoyed the process. Following on from that she has experimented with landscapes using pen and wash.

<https://www.instagram.com/veritystella>



Urban Sketchers

Urban sketchers are active globally, with a Yorkshire group that meets regularly in Bingley. See Louise Garrett, Terry McAllister or Rob Thompson for details. See Yorkshire Urban sketchers on [Facebook](#).



Charlotte Whitmore

Charlotte Whitmore studied jewellery design at Bradford Art College and then took a degree in silversmithing at Sheffield Hallam University in the late 80's and early 90's. After several years teaching design she now runs her own

contemporary jewellery business, making her mixed media jewellery from a small workshop in Bingley. Charlotte hand builds most of her work using traditional silversmithing techniques. She works predominantly in silver but likes to incorporate other materials such as vintage plastic, glass and wood to add colour and texture to her work. Her jewellery is based around botanical design, taking inspiration from the hedgerows, woodland and moorland near to where she lives. She exhibits and sells her work at various exhibitions and galleries around the UK.

<https://www.instagram.com/charlotte.whitmore>

<https://www.charlottewhitmore.com/>



About our hosts

Bingley Baptist Church Hub

The Bingley Baptist Church is a safe inviting space for everybody. We have developed the ground floor of our building to be a hub for the local community to connect with and use, hosting a Saturday Art Workshop and many other activities.

Damart

Damart is an international clothing company that has been based in Bingley since 1967. As part of the local community we are pleased to work with local groups and support community activities in many ways, including by opening our historic mill for events, workshops and exhibitions.

The Bingley Gallery

The Bingley Gallery is a welcoming, artist-run, venue which exhibits, and sells, a wide range of art work from the region's talented artists with a regularly changing exhibition and regular artists, including David Starley and Jane Fielder.

The Craft House, Bingley

As well as being a bustling cafe that exhibits artworks, The Craft House runs expert-led arts and crafts workshops as well as selling a carefully curated selection of handmade art and gifts.